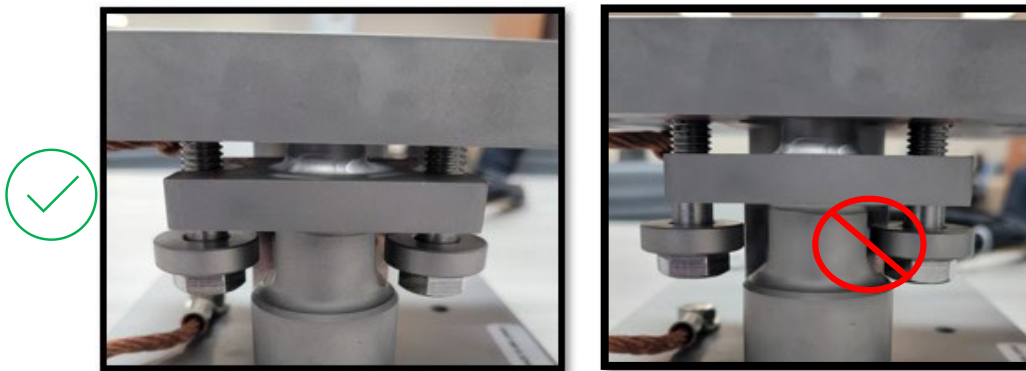


## OneMount Installation Quick Reference

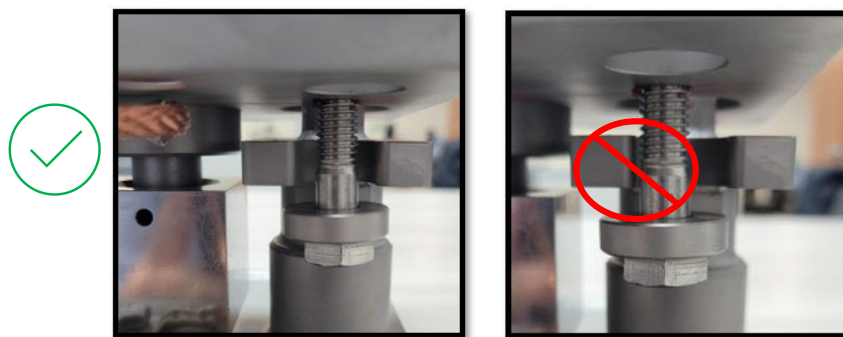
A guide to assist in alignment of the HARDY OneMount load points to prevent binding.

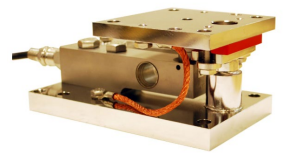
IMPORTANT NOTE: When mechanical misalignment occurs on any system, it may create “binding”. When systems bind, inaccuracies occur and the system may not return to zero when weight is removed.

END VIEW: The bolts and washers must be free from binding and are centered in their machined cavity. When correctly installed, none of the components should be in contact with the center T-shaped post. The fasteners are designed to be threaded partially to allow for 1/8” of washer spacing in all directions.

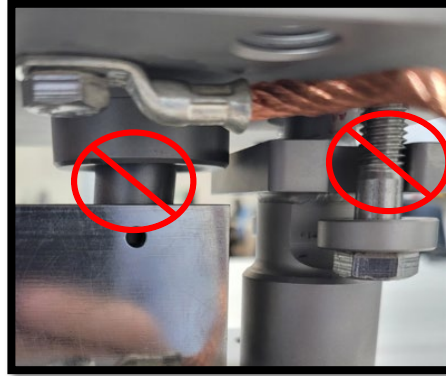
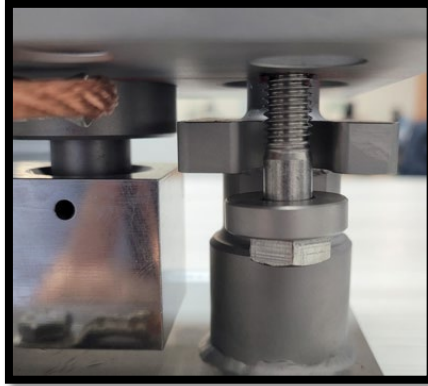


SIDE VIEW: When properly aligned, liftoff bolts will be centered in the machined center post cavity.





SIDE VIEW: Correct alignment is a vertical load pin and a centered liftoff bolt.



TOP PLATE VIEW: When aligned correctly, the pin is centered in the top plate.  
Note that this top view may be obstructed when the mount is under support legs.

